

# April is one of the Deadliest Months in the Metal and Nonmetal Mining Industry

The beginning of spring in the metal and nonmetal mining industry signals the startup of mines that were idled during the winter months. Often when these operations recommence, they begin with new employees who are new to the mining environment. The new workforce, along with miners performing unfamiliar tasks, has resulted in the month of April being the second deadliest month in the MNM mining industry with a total of 50 fatalities since 2000.

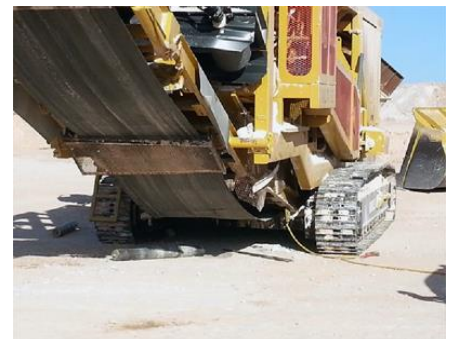
## THINK, PLAN, TRAIN...*BEFORE YOU BEGIN WORK!*

- Establish safe work procedures
- Follow manufacturers' recommendations
- Secure, block and/or chock equipment against movement
- Discuss all hazards and correct them before starting work
- Alert employees to the hazards
- Keep training up to date
- Task train employees



## Task Analysis and Work Place Examinations

- Conduct a workplace examination of the area before you start to work
- Analyze the job before beginning work
- Hazards associated with the job should be properly communicated, before starting work
- Make sure appropriate tools are available for the job/use them



*"The first priority and concern of all in the coal or other mining industry must be the health and safety of its most precious resource-the miner" and that " deaths and serious injuries from unsafe and unhealthy conditions and practices in the coal or other mines cause grief and suffering to the miners and to their families--" Mine Safety and Health Act of 1977*